



A I R C R A F T

CUSTOM KIT

CK-AG-65

REV A: 05/12/2026

S2R-T660 (710P) STAINLESS STEEL STEP UPGRADE

AIRCRAFT AFFECTED:

MODEL

S2R-T660

SERIAL NUMBERS

-194 & Subsequent

David E. Yarbrough

David Yarbrough
Director of Engineering

LOG OF REVISIONS

NOTE: Reformatting and correction of typographical errors is not considered revision.

REV	PAGE	DESCRIPTION OF REVISION	BY
IR	All	New Document Initial Release	T. Surratt 04/06/2026
A	6	Added NOTE to step #3 and photo (Figure 2).	T. Surratt 05/12/2026

TABLE OF CONTENTS

1. PURPOSE/REASON FOR PUBLICATION	4
2. SCOPE/COMPLIANCE.....	4
3. BY WHOM WORK WILL BE ACCOMPLISHED.....	4
4. APPROVAL	4
5. MAN HOURS	4
6. SPECIAL TOOLS	4
7. PARTS LIST	5
8. REPLACEMENT INSTRUCTIONS	6
9. RECORD OF COMPLIANCE.....	11
10. RESPONSE CARD.....	11
11. CUSTOM KIT CK-AG-65 IR COMPLIANCE REPORT.....	12

1. PURPOSE/REASON FOR PUBLICATION

The purpose of this Custom Kit is to give owners/operators the option to replace their current steel steps with the newly developed stainless-steel steps for greater durability and longevity.

2. SCOPE/COMPLIANCE

This document will list the necessary parts and provide instructions for the successful removal of the current steel steps and installation of the new stainless-steel steps.

3. BY WHOM WORK WILL BE ACCOMPLISHED

The work is to be accomplished by an FAA Certified A&P or foreign equivalent.

4. APPROVAL

4-1 THRUSH AIRCRAFT, LLC

This Custom Kit is approved by the Engineering Department at Thrush Aircraft, LLC as a minor installation that does not affect flight.

4-2 FAA APPROVAL

The technical content of this Custom Kit is FAA approved.

5. MAN HOURS

Approximately 16 hours required.

6. SPECIAL TOOLS

N/A

7. PARTS LIST

7.1 CK-AG-65 KIT

QTY	PART NUMBER	NOMENCLATURE	NOTES
1	530001000-1mmhm	STEP ASSY L/H	Steps Instln.
1	530001000-2	STEP ASSY R/H	Steps Instln.
2	AN4 14A	BOLT	Steps Instln.
4	AN4 23A	BOLT	Steps Instln.
6	NAS1149F0463P (AN960 416)	WASHER	Steps Instln.
6	MS21044N4	NUT	Steps Instln.
2	11003T001	SIDE SKIN	(L/H & R/H Reversible)
2	90042T909	PLACARD	(RESTRICTED, GREY)

7.2 REUSE OR REPLACE AS APPROPRIATE

(Not included with CK-AG-65 Kit.)

QTY	PART NUMBER	NOMENCLATURE	NOTES
12	1142012	STUD	Camloc Instln. (Various lengths as appropriate)
12	1142905	SNAP RING	Camloc Instln.
12	4002 NS	GROMMET	Camloc Instln.
2	AN526 832 R12	SCREW	Bumper Instln.
2	MS21044N08	NUT	Bumper Instln.
2	NAS1149FN816P (AN960 8L)	WASHER	Bumper Instln.
2	8884T25	BUMPER	Bumper Instln.

8. REPLACEMENT INSTRUCTIONS

1. Remove L/H and R/H lower side skins then set aside. (Reference Figure 1)

NOTE: If reusing existing studs, grommets, and snap rings, remove from each skin and set aside. If not, properly discard.

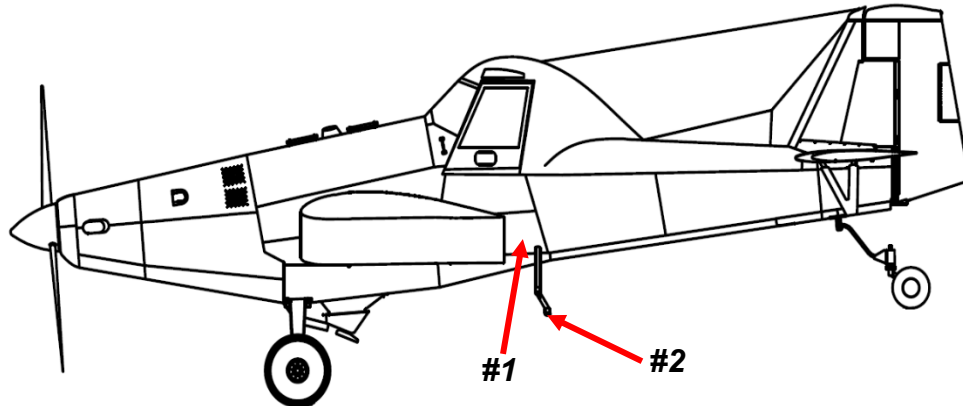


Figure 1

2. Remove steel L/H and R/H step assemblies.
3. Install L/H & R/H stainless steel step assemblies.

NOTE: It may be necessary to up-size holes in lower plate of step assemblies to match fuselage bushings. It is acceptable to increase hole size from 1/4" to 5/16" in lower plate. (Reference Figure 2)

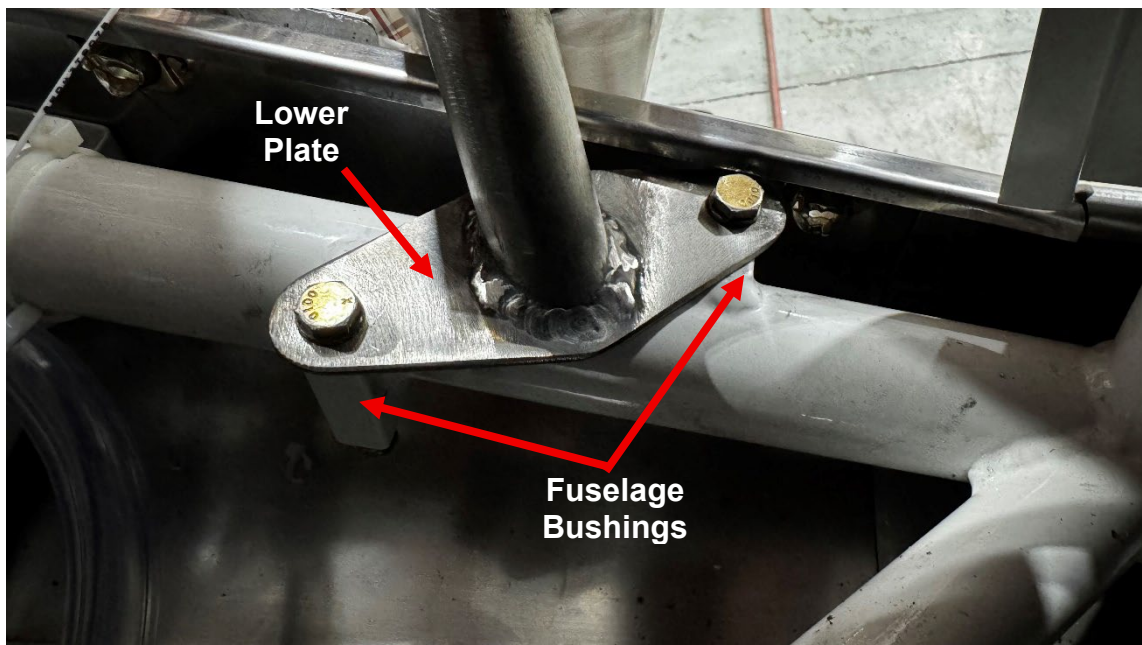


Figure 2

4. Ensure all studs, grommets, and snap rings are removed from L/H and R/H lower side skins.
5. Place removed skins on top of new skins on a flat surface, mirroring orientation.
(Reference Figures 3 & 4)

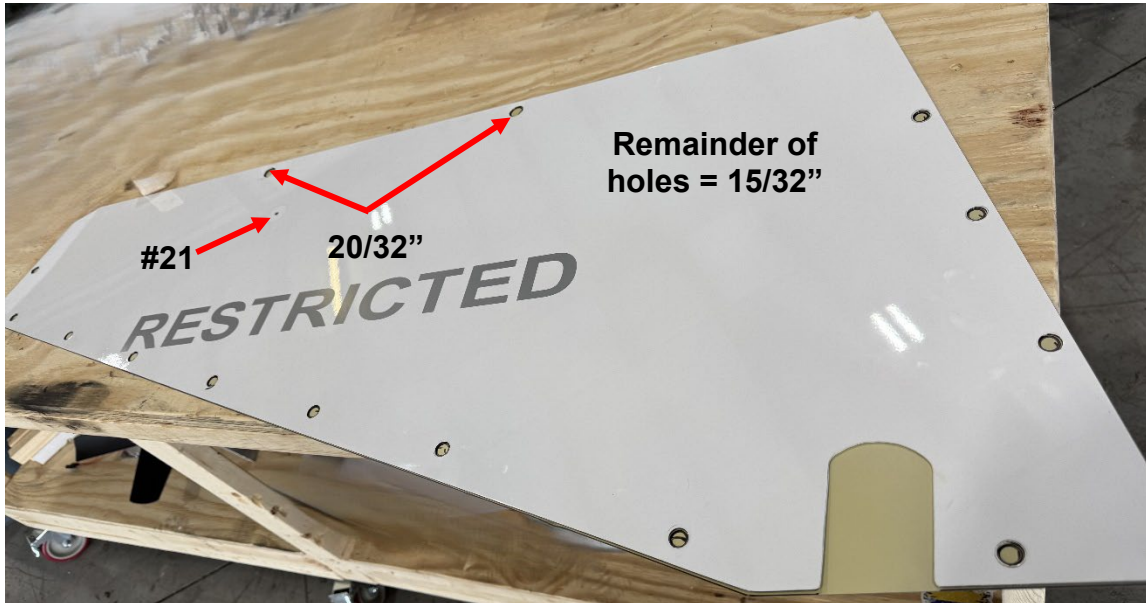


Figure 3



Figure 4

6. Transfer hole locations for Camlocs and bumpers onto new skins. Do NOT transfer location of cutout for steps. (Reference Figure 4)

7. Use appropriately sized metal hole saw and bit to drill out each hole for Camlocs and bumper in skins then deburr. (Reference Figure 3)
8. Temporarily install skins using Camlocs as required. (Reference Figure 5)
NOTE: It is not necessary to install snap rings on grommets for this process.

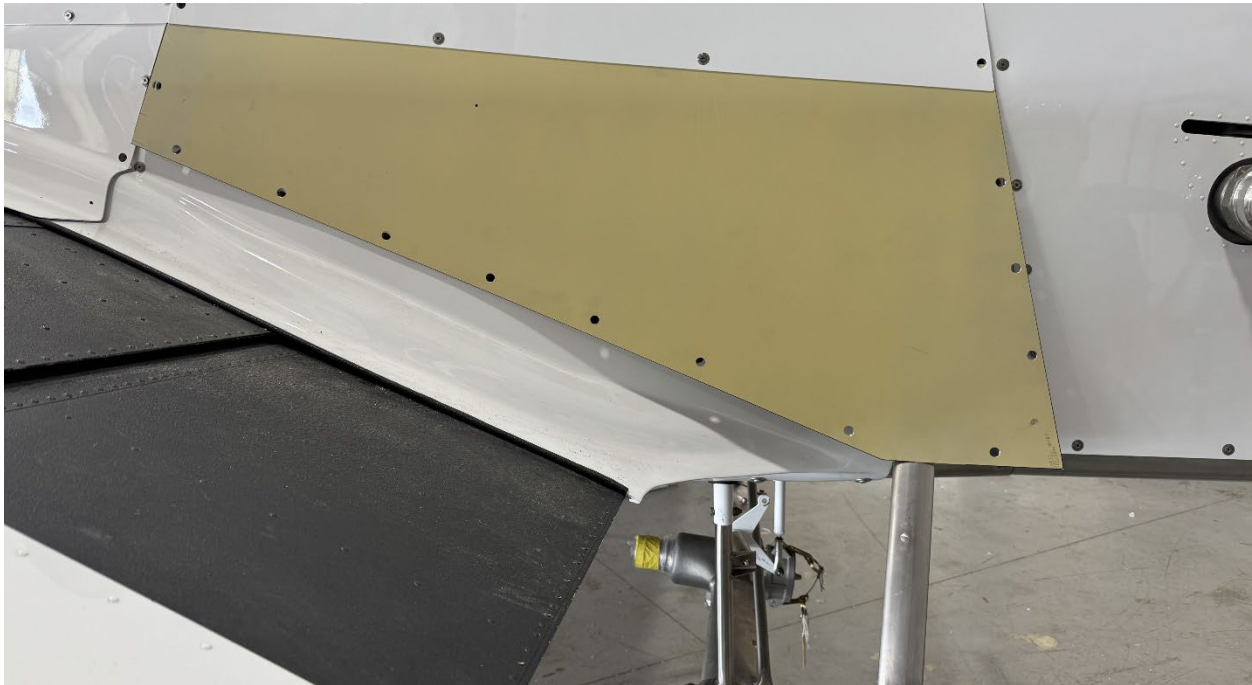


Figure 5

9. Mark cutout location for steps on each skin.

10. Remove skins then trim to fit, ensuring to have .125" clearance around Step Assembly then deburr. (Reference Figure 6)

NOTE: It is advised to remove material, a little at a time, constantly checking to ensure desired outcome.

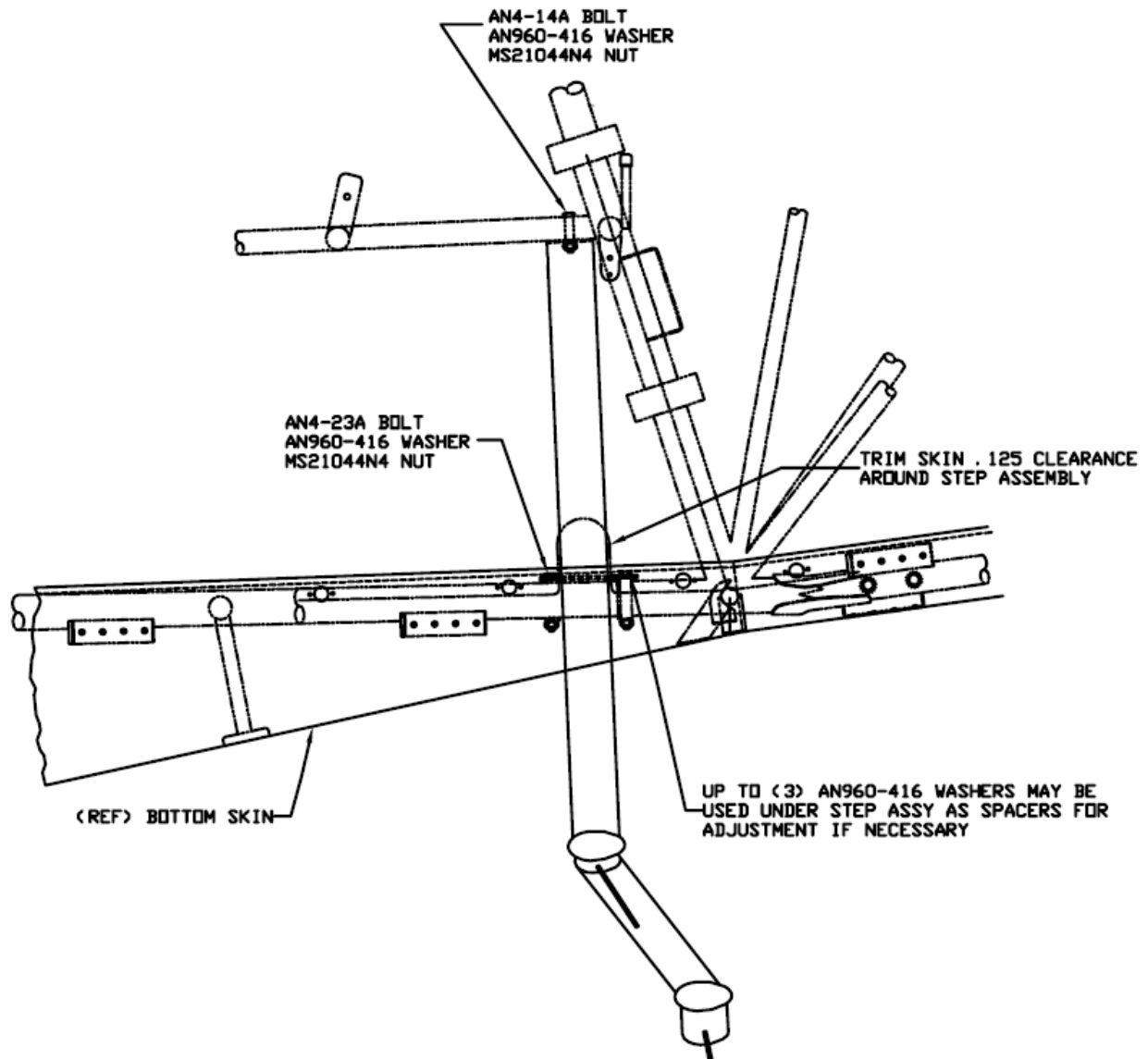


Figure 6

11. Return skins to work area and wipe down with acetone or an equivalent cleaning solution to remove markings, oil, grease and all other debris then allow to dry.
NOTE: Do NOT clean with abrasives.
12. Paint skins (front and back) with silicone alkyd copolymer enamel conforming to MIL-E-24635, Type II, Class 1.
NOTE: Allow enamel paint to completely dry between each coat.
13. Locate and install placard (RESTRICTED) to each skin.
NOTE: Reference previous skins for placard locations.
14. Install bumper on each skin.
15. Install studs, grommets, and snap rings as appropriate to ensure proper latch to receptacles.
16. Install complete L/H and R/H lower side skin assemblies to aircraft. (Reference Figure 7)



Figure 7

9. RECORD OF COMPLIANCE

Make appropriate entry in airplane maintenance records as follows:

“Thrush Custom Kit CK-AG-65 A complied with at _____ total hours on aircraft.”

Modification accomplished by:

Name & Certificate #	Date
----------------------	------

10. RESPONSE CARD

The final step in compliance with this Custom Kit is to complete and return the compliance card on the next page. It may be mailed, faxed, or scanned and e-mailed.

Fax:	Thrush Support	229-317-8225
Email:	Thrush Support	support@thrushaircraft.com

11. CUSTOM KIT CK-AG-65 A COMPLIANCE REPORT

Aircraft S/N:	Aircraft Owner:
Aircraft Registration #:	Address of Owner:
Airframe Total Time:	City & State:
Engine Total Time:	Physical Location:
Complied With By:	Date of Compliance:
Signature:	Certificate #:

PLEASE RETURN THIS REPORT ONLY AFTER MODIFICATION IS MADE

This response card may be mailed, faxed to (229) 317-8225, or emailed to support@thrushaircraft.com.

Fold, Tape, & Mail (Do Not Staple)

Return Address:

Thrush Aircraft LLC.
Attn: Customer Assurance and Support
300 Old Pretoria Road
Albany, GA 31721